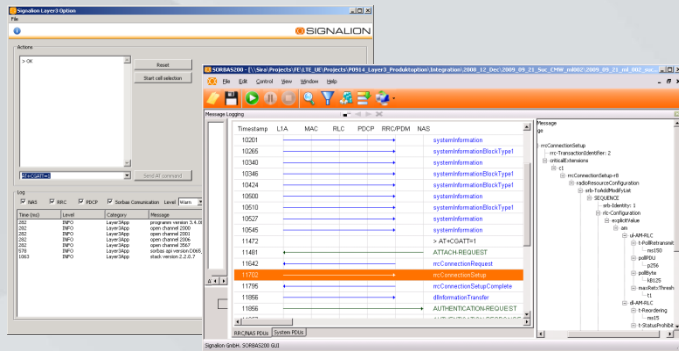


Sorbas 200 Software Option for PDCP/L3 Emulation & Test



Extend your Sorbas 200 Test-UE with the PDCP/L3 Emulation & Test option and be able to simulate and test all layers of the UE!

Increase Cost Efficiency

by extending the Single UE test system for E2E testing of real traffic and benefit from a complete L3 protocol stack implementation.

Shorten Time To Market

with efficient testing and high quality support from Signalion's LTE- test system integration experts

Improve your Test Quality

with Sorbas' advanced regression testing capabilities

The Sorbas 200 Test-UE can be extended by adding the Sorbas 200 PDCP/L3 option. This new option extends Sorbas 200 to include all the necessary protocol functionality of an LTE-UE. This option enables:

- PDCP testing
- RRC testing
- NAS testing

This option can be used Lab environments for research and development as well as in live field trials to emulate the behaviour of a complete LTE-UE. The system operates via an AT-command interface and provides a powerful Logging and Tracing GUI

The following functionalities and procedures are currently supported:

NAS

- Security
- USIM (via emulation or external USIM Reader)
- Radio Bearer control
- PLMN selection and roaming
- Mobility management

RRC

- L3 Message decoding
- PLMN Search & Cell reselection
- RRC Connection Establishment and Release
- Bearer Configuration
- Measurements and Reporting
- Mobility and Security

PDCP

- In-sequence delivery and duplicate avoidance during handover
- Timer based SDU Discard
- STATUS report handling
- Ciphering and Integrity protection
- ROHC RTP, UDP and TCP profiles (future upgrade path to ROHC v2)

The Sorbas 200 PDCP/L3 option is delivered as a PC based software application with GUI support. The GUI captures inter-task messages used within the protocol stack. A variety of measurement charts are available. The charts are used to display throughput and distribution measurements across the protocol stack layers. In addition to this, cell measurements are displayed (e.g., RSRP or RSRQ) and ASN.1 message decoding is provided. The Sorbas 200 PDCP/L3 option can run remotely on any PC within the same network as the Sorbas 200 Test-UE via the Sorbas Open LTE API.

Recommended PC Specification

- Processor 2.8 GHz Intel Pentium 4 processor
- Operating System Windows™ XP Professional
- Memory 2048 MB
- Display SXGA
- Hard Drive 10 Gbytes free hard disk space
- Ethernet 1000 Base-T

CONTACT

Signalion GmbH
Am Waldschlösschen 2
D-01099 Dresden, Germany
Fon +49 351 2069310
Fax +49 351 20693111
Mail sales@signalion.com

